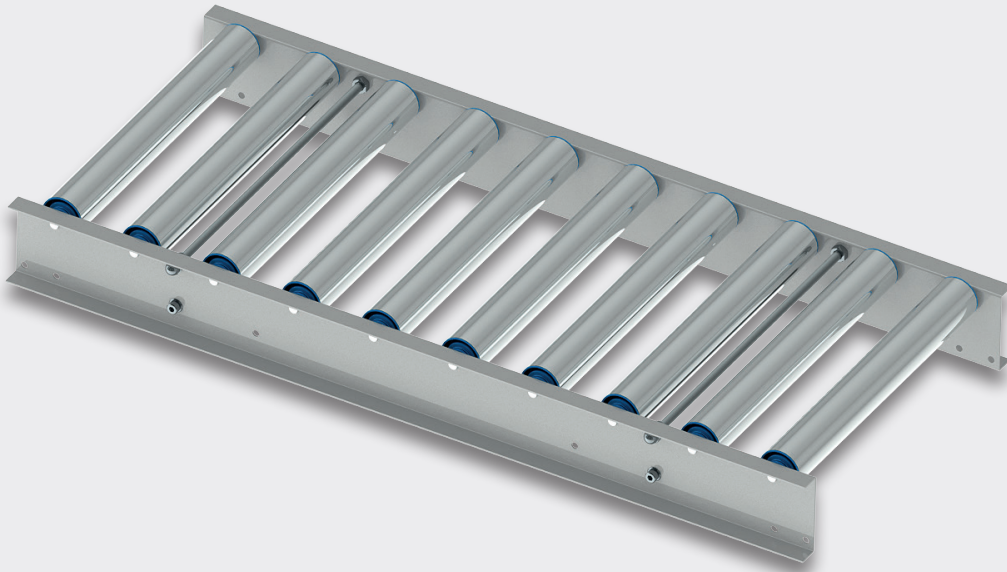


MANUAL LIGHT DUTY CONVEYOR

Smooth-running roller conveyor LRB 50-110



PRODUCT DESCRIPTION

The economical LRB 50-110 smooth-running roller conveyor is used for gravity-driven transport of small unit loads by means of inclines. The LRB 50-110 smooth-running roller conveyor is mostly used for manual order picking.

TECHNISCHE DATEN

Load capacity (max.)	400 kg/m*
Required gradient	2-5%, depending on condition and weight
Ambient temperature	0 to +50°C

GENERAL

Nominal widths	300 to 900 mm (in 100 mm increments); other nominal widths possible on request
Roller pitch	62.5 / 100 / 125 / 200 mm
Possible roller track pitch	any multiple (min. 2x) of the roller pitch up to max. 3,000 mm; other lengths possible on request

IDLER ROLLER

Roller type	Idler with steel ball bearing and Ø12 mm spring axle
Roller diameter	50 mm
Roller material	galvanised steel

SIDE PROFILE

U-profile frame	25 x 100 x 25 mm, galvanised steel, profile height 100 mm, top edge of roller is 10 mm above the U-profile frame
-----------------	--

**Area load: guide values for NB 300, span 1 m and pitch 62.5 mm