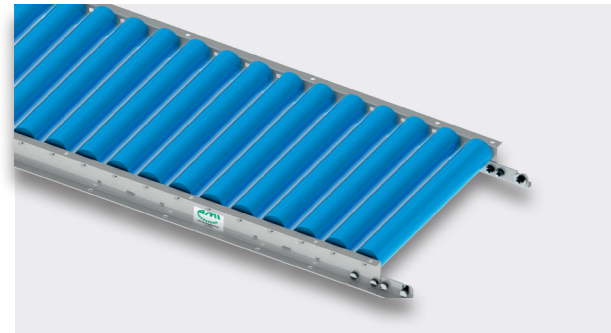


# MANUAL LIGHT DUTY CONVEYORS

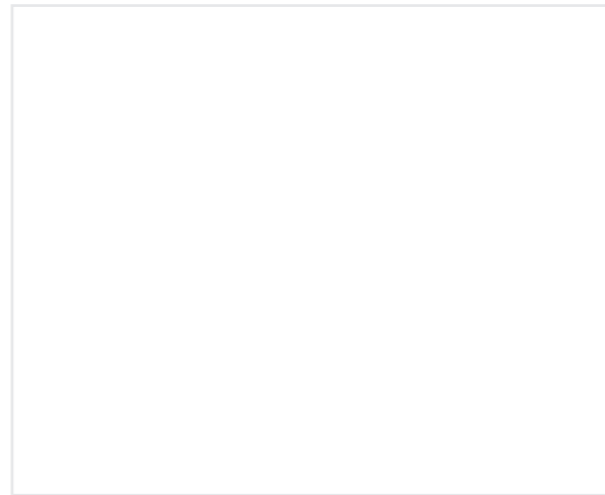
Accessories

## CONNECTING MATERIAL



### Connecting material

Galvanised connecting bracket including mounting material  
Used to connect two roller conveyors of the same type



## SIDE GUIDES



### Side guide C-Profile variant 20 x 60 x 20 galvanised

For easy mounting on the roller conveyor profile  
Includes fastening material



### Side guide C-Profile variant 28 x 12 galvanised

Adjustable width and height  
Includes fastening material



### Side guide C-Profile variant 28 x 12 with material S

Adjustable width and height, gentle and gliding  
Includes fastening material



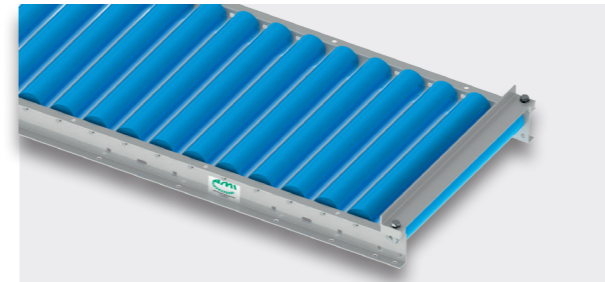
### Side guide Round tube variant Ø 22mm galvanised

Adjustable width and height  
Includes fastening material

# MANUAL LIGHT DUTY CONVEYORS

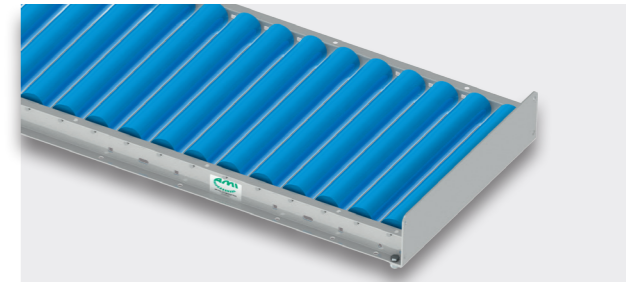
Accessories

## END STOPS



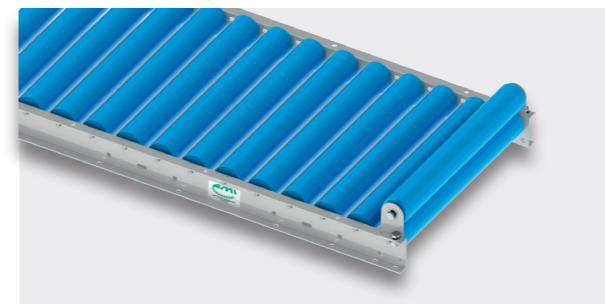
### End stop angle 40 x 20 galvanised steel

Includes fastening material



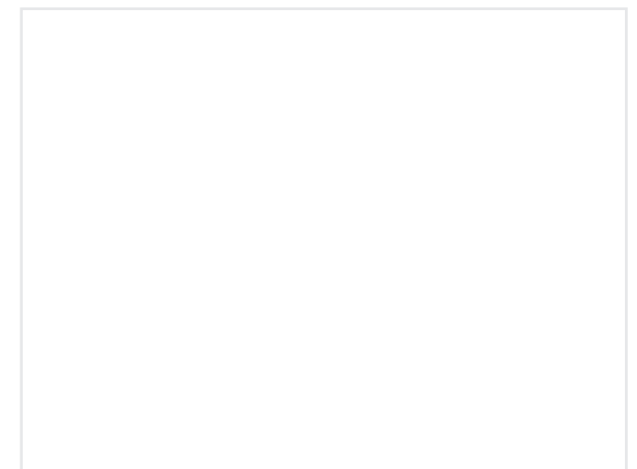
### End stop angle 103 x 30 galvanised steel

Includes fastening material



### End stop roller PVC Ø 50mm

Height: 63 mm above the top edge of the profile  
Includes fastening material



## SUPPORTS



### Bipod support Type Steel

With screw-in adjustable base

Various height available SH = 250 - 1150 mm



### Bipod support Type Aluminium-telescoping

With screw-in adjustable base

Various heights available  
SH = 240 - 410 mm  
SH = 340 - 610 mm  
SH = 540 - 1.010 mm  
SH = 1.130 - 1.410 mm

Additional accessories available on request